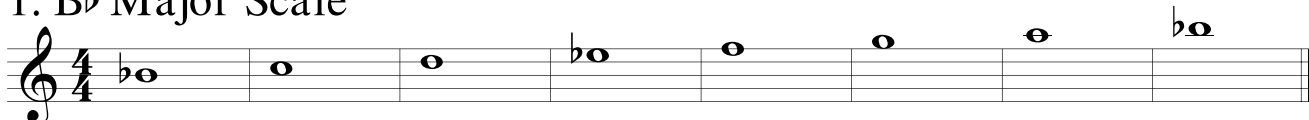


# Flutes

# 1

## 1. B $\flat$ Major Scale



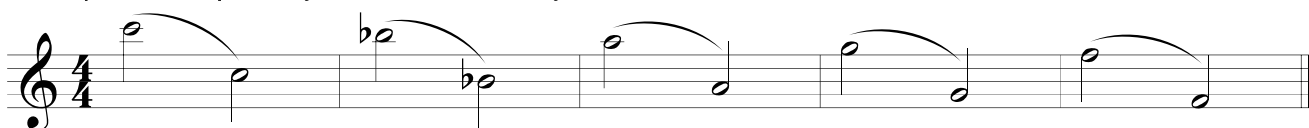
## 2. Lip Slurs

Tongue only the first note of each measure. Let the notes touch each other.

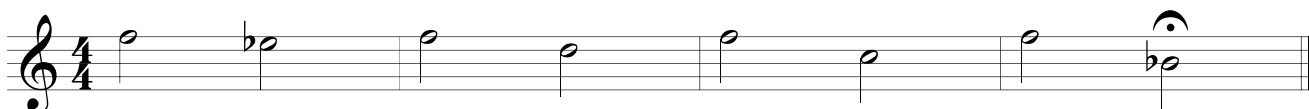


## 3. More Lip Slurs

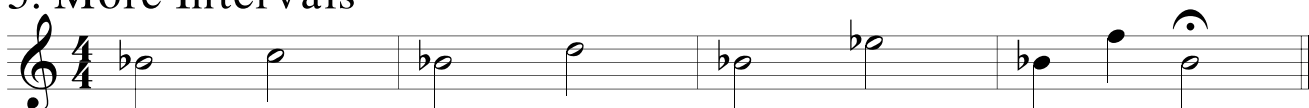
Lip slurs improve your tone, flexibility, and air control.



## 4. Intervals

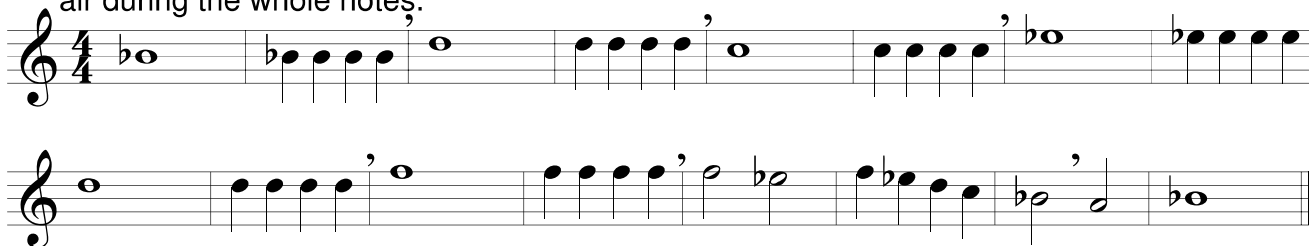


## 5. More Intervals



## 6. Sustained Tonguing

Breathe only where marked. The air during the quarter notes should feel the same as the air during the whole notes.



# Flutes

# 2

## 1. A $\flat$ Major Scale

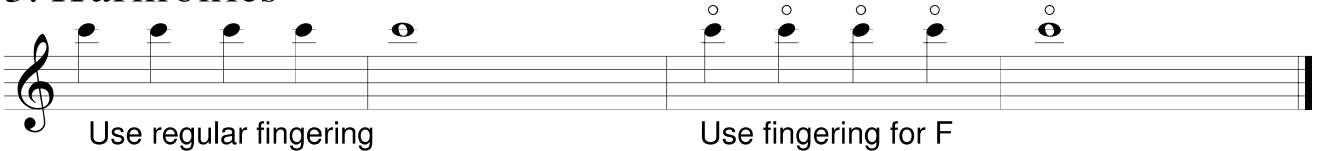


## 2. Lip Slurs

Stay relaxed while playing these slurs. The smoother...the better



## 3. Harmonics



Use regular fingering

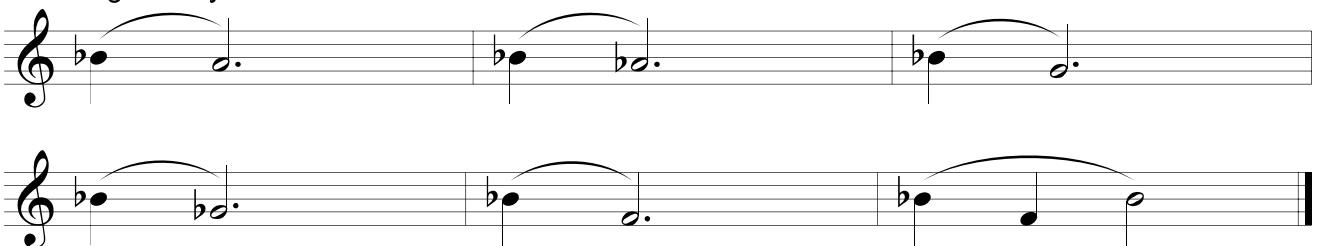
Use fingering for F

## 4. Tonguing



## 5. Slurs - Low Register

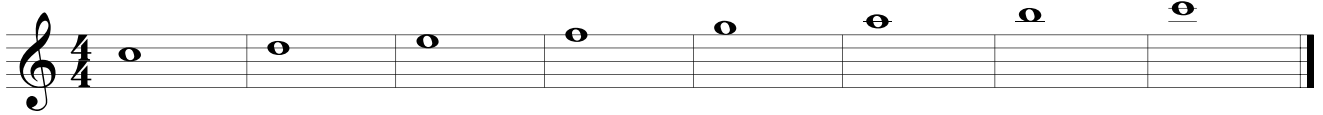
Tongue only the first note of each measure.



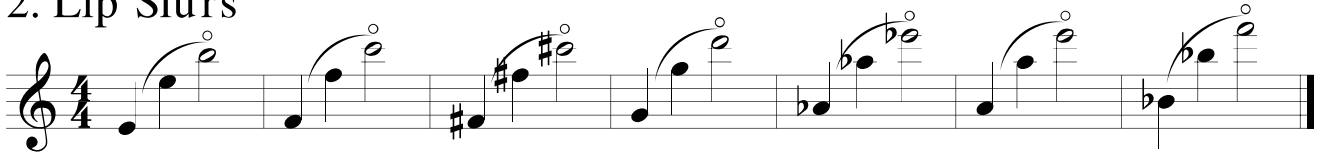
# Flutes

# 3

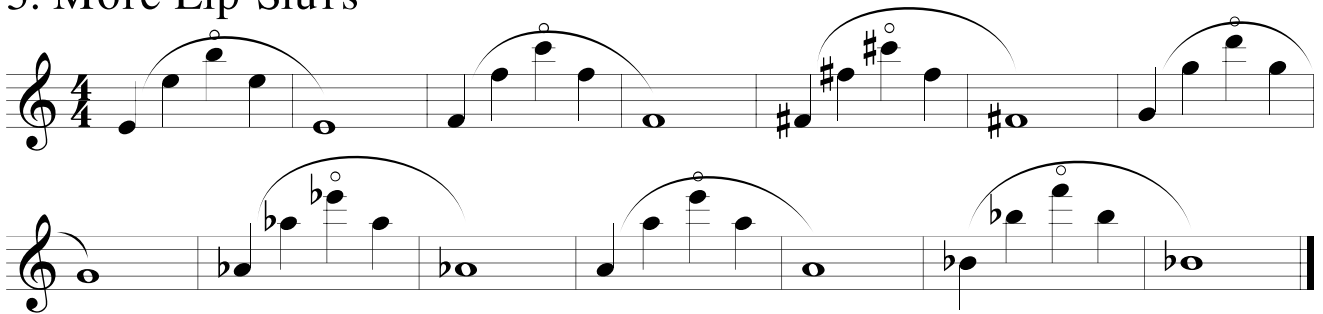
## 1. C Major Scale



## 2. Lip Slurs



## 3. More Lip Slurs

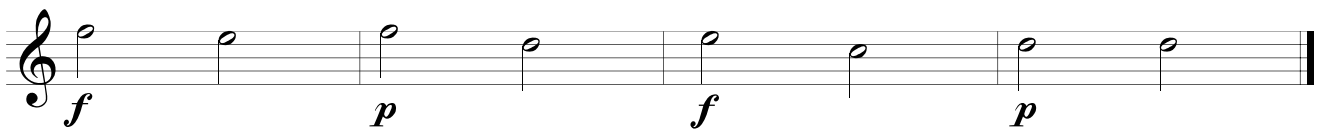


## 4. Intervals

Hear each note in your head.



## 5. Dynamics



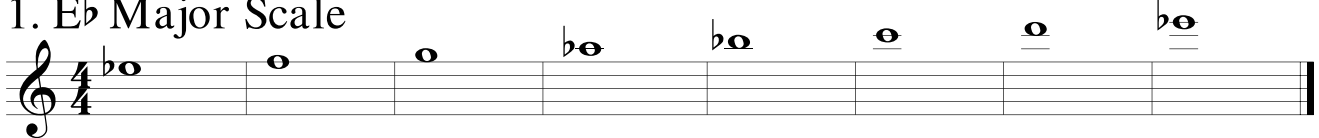
## 6. Technique



# Flutes

# 4

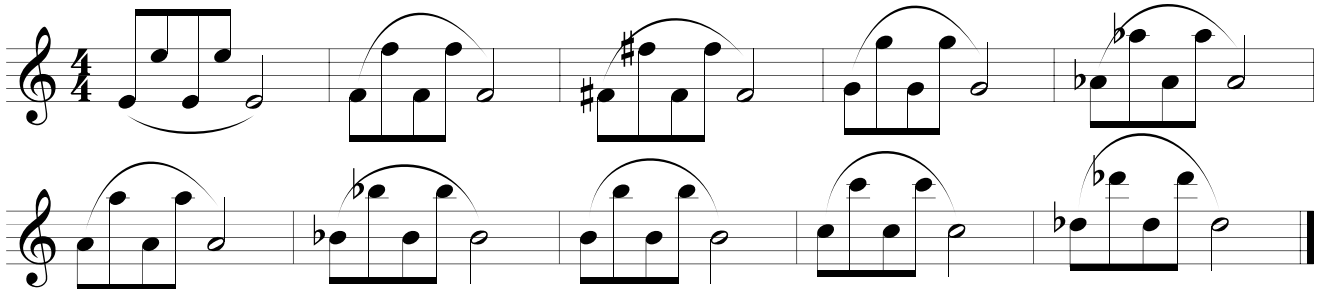
## 1. E<sup>b</sup> Major Scale



Musical notation for the E<sup>b</sup> Major Scale in 4/4 time. The scale is written on a single staff with a treble clef. The notes are: E<sup>b</sup> (half note), F (half note), G (half note), A (half note), B<sup>b</sup> (half note), C (half note), D (half note), E (half note), F (half note), G (half note), A (half note), B<sup>b</sup> (half note), C (half note), D (half note), E (half note). The notes are grouped into measures of four notes each.

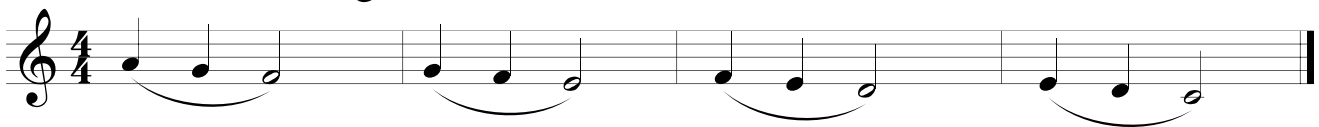
## 2. Lip Slurs

Tongue only the first note of each measure. The smoother...the better



Musical notation for Lip Slurs in 4/4 time. The exercise consists of two staves. The first staff has five measures, each containing a slur over four eighth notes. The notes in each measure are: (1) G4, A4, B4, C5; (2) A4, B4, C5, D5; (3) B4, C5, D5, E5; (4) C5, D5, E5, F6; (5) B4, C5, D5, E5. The second staff has five measures, each containing a slur over four eighth notes. The notes in each measure are: (1) G3, A3, B3, C4; (2) F3, G3, A3, B3; (3) E3, F3, G3, A3; (4) D3, E3, F3, G3; (5) C3, D3, E3, F3.

## 3. Slurs - Low Register



Musical notation for Slurs - Low Register in 4/4 time. The exercise consists of a single staff with a treble clef. The notes are: G3 (half note), A3 (half note), B3 (half note), C4 (half note), D4 (half note), E4 (half note), F4 (half note), G4 (half note), A4 (half note), B4 (half note), C5 (half note), D5 (half note), E5 (half note), F5 (half note), G5 (half note), A5 (half note), B5 (half note), C6 (half note). The notes are grouped into measures of four notes each, with a slur under each measure.

## 4. Articulation

Follow the articulations closely. Each measure of quarter notes should sound different.



Musical notation for Articulation in 4/4 time. The exercise consists of a single staff with a treble clef. The notes are: G4 (quarter note), A4 (quarter note), B4 (quarter note), C5 (quarter note), D5 (quarter note), E5 (quarter note), F5 (quarter note), G5 (quarter note), A5 (quarter note), B5 (quarter note), C6 (quarter note), D6 (quarter note), E6 (quarter note), F6 (quarter note), G6 (quarter note), A6 (quarter note), B6 (quarter note), C7 (quarter note). The notes are grouped into measures of four notes each, with a slur under each measure.

## 5. Chromatic Scale

Try to do each line in one breath. You may need to look up the fingerings to a couple notes.



Musical notation for Chromatic Scale in 4/4 time. The exercise consists of two staves with a treble clef. The first staff has four measures of quarter notes: (1) G4, A4, B4, C5; (2) D5, E5, F5, G5; (3) A5, B5, C6, D6; (4) E6, F6, G6, A6. The second staff has four measures of quarter notes: (1) B6, C7, D7, E7; (2) F7, G7, A7, B7; (3) C8, D8, E8, F8; (4) G8, A8, B8, C9.